



IDEAL NETWORKS

LanTEK® III **LAN Cable Certifier**

Quick Reference Guide
Quick Setup Mode



Proof of Performance

Quick Setup

Quick Setup is an operational mode for LanTEK III that places the most common setup functions on a single screen that simplifies and speeds tester configuration.

From the Quick Setup screen the user, customer, job, test standard and test name/number details can be updated.

Use the keypad arrow keys to select a field and press Enter to modify the entry. The settings will be used for each Autotest until updated.

Screen Element Descriptions

1. Remaining battery percent and mains power connected indicator
2. USB flash drive connected
3. Total number of tests stored in memory
4. Currently selected test standard/cable type
5. Active Job name to which tests are saved
6. Technician/operator name
7. Customer/Job site name (after colon separator)
8. Installation company name (after colon separator)

The screenshot shows the 'Quick Setup' screen of a device. At the top, there's a status bar with a battery icon (100%), a USB icon, and a memory icon (123). The time is 13:23 and the date is 08/01/18. Below this, the text 'Cat 6-250 UTP Chan' and 'BLDG 1' are displayed. The main section is titled 'User Information' and contains several input fields: 'JOHN' (6), 'CITY ELECTRIC' (7), 'OFFICE PAR' (8), 'BLDG 1' (9), 'Cat 6-250 UTP Chan' (10), 'FLOOR 3-PORT' (11), and '0001' (12). At the bottom, there are two checkboxes: 'Autosave' (13) and 'Auto Increment' (14). Below these are four buttons: 'Jobs' (15), 'To USB' (16), 'AnyWARE' (17), and 'Exit' (18).

Screen Element Descriptions

9. Job folder name for test storage - newly entered jobs will be created and made active after first test
10. Selected standard/cable type to test
11. Test ID prefix (same for every test in job)
12. Test ID counter/increment - can be numbers/ letters
13. When selected every PASS test is automatically saved. FAIL tests will not be automatically saved

14. Automatically increments Test ID counter (12) after each saved test.
15. Open list of Jobs
16. Copy current Job to USB flash drive
17. Enable USB Wi-Fi adapter for use with IDEAL AnyWARE™ app
18. Exit Quick Setup mode back to standard user interface

Setup: User Information

Operator:

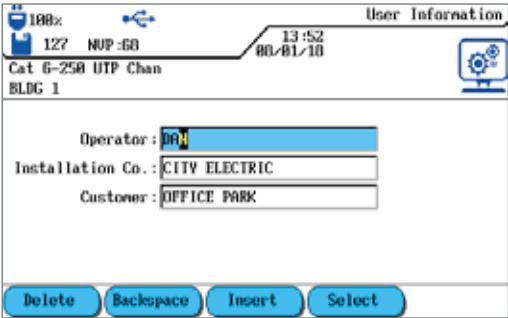
Enter the name of the technician operating the LanTEK III. This name should be updated when different operators use the tester to track the cables tested by each technician. Pressing F4 (Select) allows selection from a list of previously entered names.

Installation Co. :

Name of the company that is performing the installation work and testing.

Customer:

Name of customer/location where testing is being performed. The three names will appear on one line on the main screen separated by a colon character.

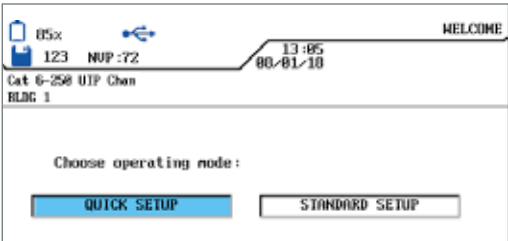


Setup: Operating Mode on Boot

Boot Prompt

On new testers or when selected in the preferences menu, the tester will prompt the user to choose an operating mode.

Use the Left or Right arrow keys and press Enter to select a mode.



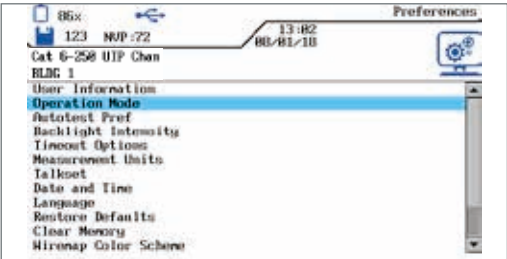
Setup: Manually Selecting Mode

Set mode from Preferences menu

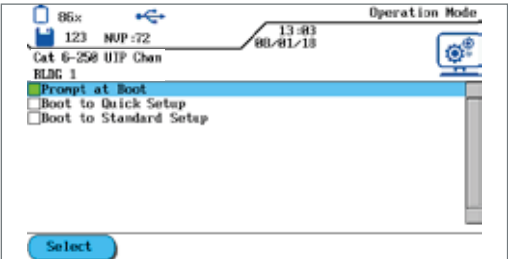
Follow the process below to choose from one of three modes: Prompt on boot, Always use Quick Setup, Always use Normal mode.



1. Choose Preferences from the main screen



2. Select Operation Mode and press Enter



3. Select a mode, press F1 (Select), then press Enter

IDEAL INDUSTRIES Networks Ltd.
Stokenchurch House, Oxford Road
Stokenchurch, HP14 3SX
High Wycombe, United Kingdom

www.idealnetworks.net

Publication no.: 161854, Rev. 1

© 2018 IDEAL INDUSTRIES Networks Ltd. All Rights Reserved.
LanTEK, IDEAL and the IDEAL NETWORKS logo
are trademarks or registered trademarks of
IDEAL INDUSTRIES INC.

A subsidiary of IDEAL INDUSTRIES INC.



IDEAL INDUSTRIES, INC.